

SILENT ENEMY

AANISHINABEMOWIN VERSION



SILENT ENEMY

Christian Ryan
Writer

Ezra Clayton Daniels
Illustrator

Christian Ryan
Focus group short

Sean Muir
Focus group testing and editor

Brandon Mitchell
Lettering

Indigenous Story Studio
Publisher

Treaty #3 language speakers
Translation

Acknowledgements

Alison Palmer, Kali Leary, Paleah Black Moher, Kevin Linn,
Spencer Edelman, Tracy Torchetti

The content in this comic book may stir up unpleasant feelings or thoughts, particularly if you or someone you know has experienced cancer. Please consider reading it with a family member or friend.

The events and characters appearing in this work are fictitious. Any resemblance to real persons, living or dead, or places, is purely coincidental and unintended.

Production of this graphic novel has been made possible through collaboration and financial support from the Canadian Partnership Against Cancer Corporation and Health Canada.

The views expressed herein do not necessarily represent the views of Health Canada or the Canadian Partnership Against Cancer.

© 2021 Copyright Ontario Health, Cancer Care Ontario

All rights reserved. This book or any portion of it may not be reproduced or used without the permission of Ontario Health and Cancer Care Ontario.

Second edition: 2021

Developed in partnership with the following organizations:





DEDE,
GIDONISHINIMIN
NA??

GAAWIIN
GIGIPAAKEMIN
SHIGWAA GIGII
KWEKIIMIN
ISH KWAAJ.

GAAWIIN
DASH GEGO
GIIWAABANDZIIMIN
NINDE'IKOZ
GIIBIMO'SEYAA.

DAWAA
GIGABIMINIZHI'AMIN
GAONISHIN
MIKANA.



GAAWIIN
AANIIN IKO'
GAAKIDOD
GIMISHOOMIS OMAA
GIIPINIGOOYEK
SHIGWAA
KIIMAJI'ON
JIGIIKIDOOYAN?

GII'KIDO
AATEKE'IZAN DONUT
SHOP IZHIPAAKI
JAA'II WAGIIWING
(OGIIDAKI).

NA MII'YE.

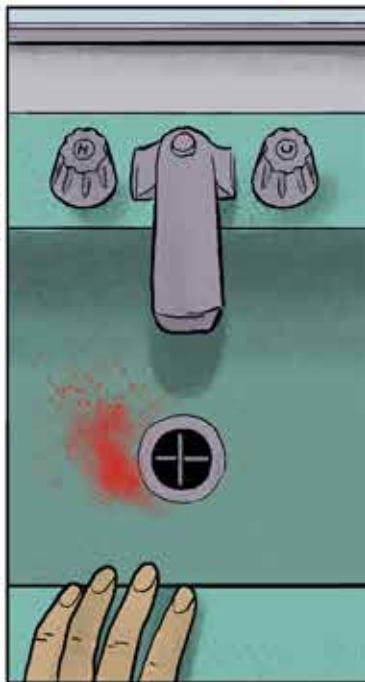
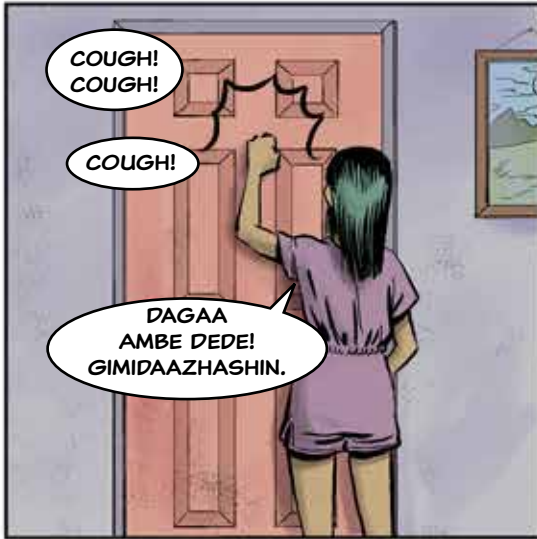


WEGONEN?



DONUT SHOP
AYAA OGIIDAKI.







MAAJAADAA
WREN! GISAYE
BABI'O
ODAABAANING!



BA' MAAJAADAA.



GINABACH GEGO
IZHE'YAA NIDEDE.



MIINISH BIINGINAG
GIKENDAMANKOD
IZHE'YAAD GIDEDE.



GEGET MAMA,
MISKWI ATE
MIIZIWIIGAMIGOONG.



WEGONEN
GADIZHIDAMONI????

ETHAN?



WEHGOO NEN?

AANIIN SHIINAAGE WHEN JIMAA JAA'YEK?



WREN IKIDO MISKWII'O 'EZIN.

AAZHA GIGIWIINDAMON, GOGEGO'IYE.

KAAN GE GO'IIIC YE.



GIGAA AANDO WAABOM MASHKIKI GII'INIMIN. GIISHPIN NIIN MAANO IZHINON!

AAZHAA GI GIIWIINDAMAA MONNI'NIM KANA GEGO'IYE.

GAAWIIN DAAKISHKIDO'SIIN, JIIGIISHITOOWAAD JIBWAA NAANO GIIZHIGAK.



WREN, DEBI'BITOON ONIK MINA?

A'HOWSA, A'HOWSA. GAA' AANII IIZHAA JIBWAA'ANOKIYYAAN.



NI' MIN JINAAWESII.
GEWIIN DOON GI'EII
NENDAA ZICHI' MINJIM
MOO SINANOOM
MAA'NOONGOM.

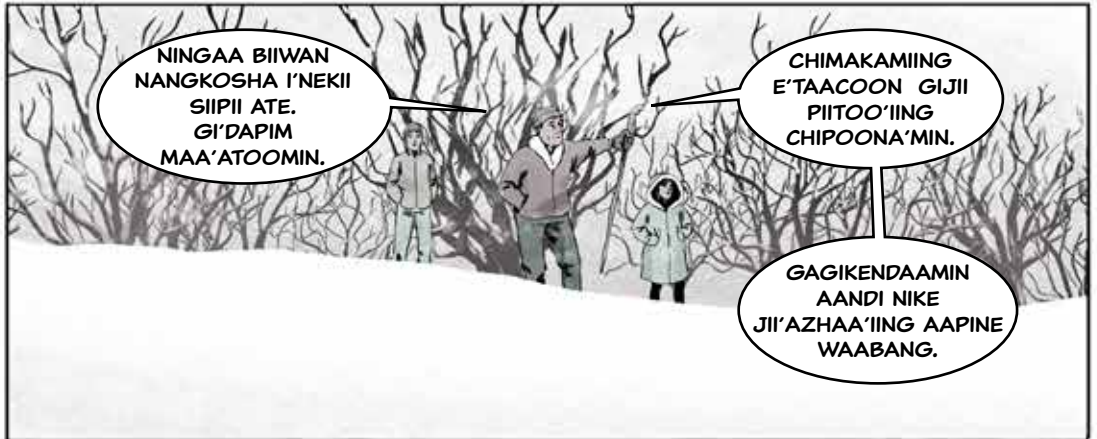
MAMA IDASH?
GIISHPIN EGAA
KII WE YANG,
DANISHIGAADIZI!

GEMICI IENEN
DAAMCHIS'ZEH
ZAAWIYAN. CHIMIKAAMING
E'TA A KAY CANDI A
BESHIYANG NOONGOM.
GITAAWII
BOODAWEMIN.



GIISHPIN GODE
MINO'AYAAYIN
WEKAADIBIKAK.

DAGASANAA.
GIMISHOOMIS
SIWASHIG WANIN.
GIIGA'GISHKIDOOMIN
CHIKE BESHIIYAANG
NAA'WATCH
KISIN.



NINGAA BIIWAN
NANGKOSHA I'NEKII
SIIPII ATE.
GI'DAPIM
MAA'ATOOMIN.

CHIMAKAMIING
E'TAACOON GIJII
PIITOO'IING
CHIPOONA'MIN.

GAGIKENDAAMIN
AANDI NIKE
JII'AZHAA'IING AAPINE
WAABANG.



GIISHPIN
NAWOTCH AA NIKO
TAAMI QWAAKSHIG
WA'E'GO WAABAMIING
GIIZIS.

MIISA AANIISH KIGA
MUSHKAWAAKOJIMIN ETOK.



APINAA
GO INABIN
CHIMINO'AYAAK,
MINA?

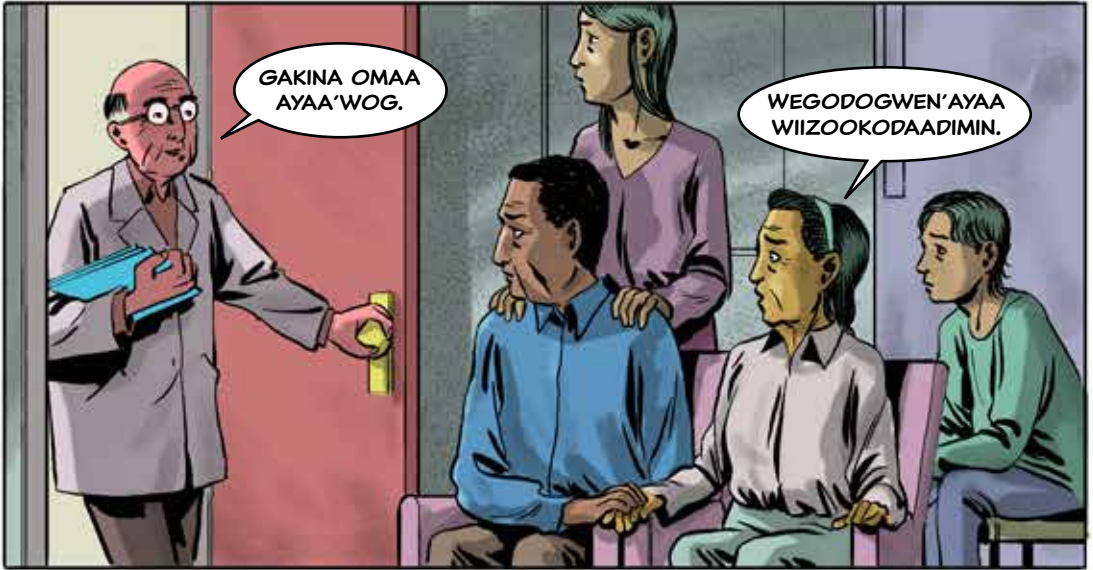


A'HOWSA
NAA'NISEK.

GAADINE'AAN
WE' WIIGOOS.



WIJIN'DIG!

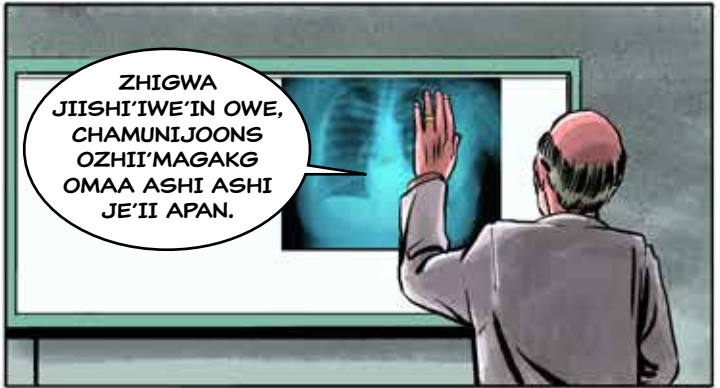


GAKINA OMAA
AYAA'WOG.

WEGODOGWEN'AYAA
WIIZOOKODADIMIN.



NAA'WATCH
MAM MEE WEIN
NIYANG, GITCHI
GEGO.



ZHIGWA
JIISHI'IWE'IN OWE,
CHAMUNIJOOONS
OZHII'MAGAKG
OMAA ASHI ASHI
JE'II APAN.



PEKAA? AA PUN
CHIMAAITICHOOSH
AAKOZIWIN?



MIIGO BIJINAG
MAAJIIGIN.

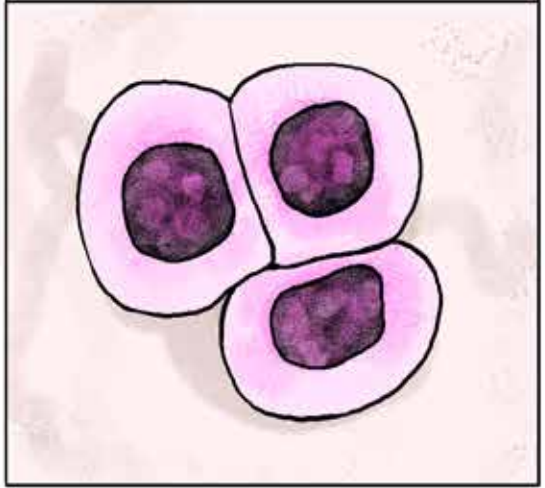




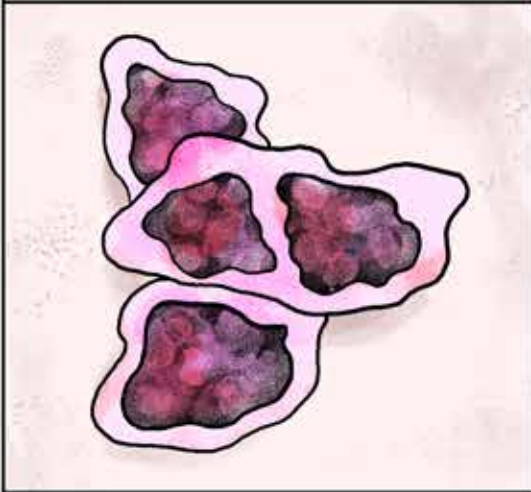
**NIIWI'NOON JI MIDAASWI AA'TAAYAWIGOO
NA'WAMEGOK BIMAATIZEWAD**



**THE BODY HAS TRILLIONS OF CELLS - SUCH
AS BONE CELLS, SKIN CELLS, AND BRAIN
CELLS.**



CANCER STARTS SMALL - IN A SINGLE CELL.



**A CELL GETS DAMAGED, YOUR BODY FIXES
OR REMOVES IT.**



**CANCER HAPPENS WHEN DAMAGED CELLS
AREN'T FIXED AND GROW OUT OF CONTROL.**



**SOME CANCER CELLS CLUMP TOGETHER AND
FORM LUMPS OR TUMOURS. THEY INVADE
THEIR NEIGHBOURS, STOPPING THEM FROM
WORKING RIGHT.**



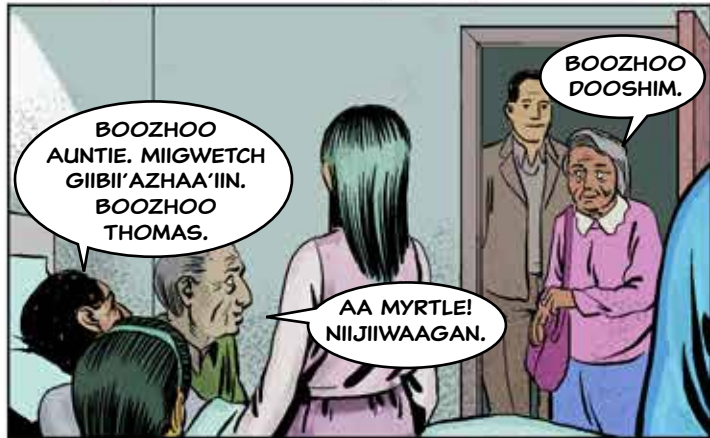




MII'AANIISH
OWE, GIGII
WIINDAMAAGO'?

AANIISH MINIK KAA'
IENDAMAN JI'BO
AABAJIT'YAN II'YE?

ME'MONO JIPAA
JAAGOOSH GIIN.



BOOZHOO
AUNTIE. MIIGWETCH
GIIBII'AZHAA'IIN.
BOOZHOO
THOMAS.

BOOZHOO
DOOSHIM.

AA MYRTLE!
NIIJIIWAAGAN.



AMAANJIGO
CHINOOKWEZI'IGEYAN
OMAA, MAMA.



KA A TAA MIJE
AANAME'MIN.
AANIISH.

MIIWIIN E'II IWE
IZHI A'MINO'AYAA.



MIIGWETCH
GIDIGO
GISHI'MANITOU
GAGGINA'GEGO
GA'MIISHIYAAN, MINO
BIMATIZIWN.

DAA NAME
MIIYET TAA
MO'WAANAN
GOSESINAN,
GIZHIMANITOO,
WAWAANA
GENAWAABAM.



AHOWSA ETHAN.
GIIN NITAM.



ZOONGIDE'E
OGICHIDAA.
ANDO' MIIGATIZO.



MIIGWETCH
PIWII JIWI
YAAN DEDE.

GAKINA
NAAKI'GIIZHIWENIMINIM.



DEDE,
GIZHIWENIMIGOO
GEGIN.



DAGA, OMAA
ADI'YAA OMAA
GAKINOO
AMAADIIGAMIG.





MAAGIZHA
GI'BOONJI'IGE.



LOGAN, DAGA
MAANISAAN?

DEDE GIGII
AASHO'TAN.



AHOWSA
E'ZHI NIIZIYAK
BIINDIGENISEK.

OWE WIIGAAS
KINIPAKITE.



TA'SING
SAGAA SAAYAN
NAWATCH GIGAA
WIIBA.

MAJAAN.



WII'JI
GIMISA.





GIMINOO'AYAA NA?
GIGIIDAKO'MIG NA?

BIISKAAWAGAN
E'TA, NIMINOO'IYE.



AAZHE
GAABO'WIN!









AMBE'ISO DOOSH PIZIGWIIN!



AANDE I'YAAT MAAJIPOOSH?



KAANGIKENDAZIIN. GIIWAANA'AANAAM KENI MIJE AANGWE DIBIKADOONG.



AMBE AANIMAAJAADAA.

AAZHA KINABAJ KIGII ZAAKAMIGIZIMIN.



DEDE, NINOONDESKATE.

AMBE'SA AANIMAAJAATAA.

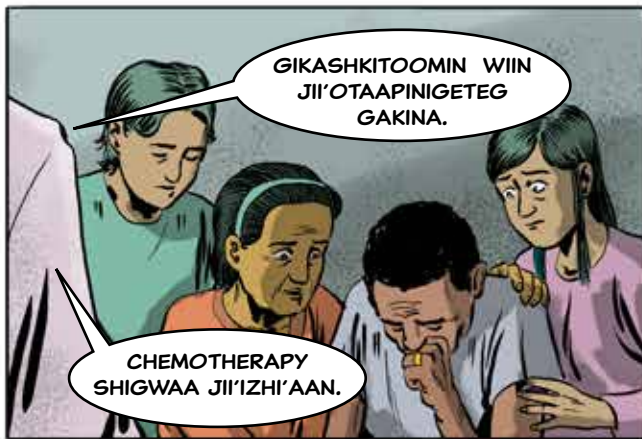


DAA IZHA WIIIN JI'AMAGWAA JIISHIISAK.



AMBE GIGA AADOMICKAAMIN ZIIBII.





GIKASHKITOOMIN WIIN
JII'OTAAPINIGETEG
GAKINA.

CHEMOTHERAPY
SHIGWAA JII'IZHI'AAN.



AANIINIKE E'JI
AANOKEMAAGOK
II'WE?



DAA QAAK
KEWII GIIZHITOOMIN
NIIWING.



DA'SING GAAPADAKI'IGO
JI'MIINOGO'WAAN MASHKIKI.



GAGIWIINSINGEDAAN SHIWAA PEPAAKAN
GI GAA E'II JE'AAYAA IMAA O'ME'ONJIN.



KI'A GAAMAAZITEHESHIG WAAKIGAA
AA'YE AA'KOZ



GIGA MIINAGOO MASHKIKI . JIMINO
SHKAAGOYENSHIG SHIGWAA
JIKANENIMIGOYEN.



SHIGWAA GIIWIINIZISAN AANIND GAAGAA
NITOOANAN.



GAAN WIKAA
NIWAAN NIKESII AAPIKAA
GIIWANISHINANG.
SHIGWAA AWE BOOSH.

GIISHPIN KAA
OGIISHIZIYAAN,
DAAGII ENENDAM GII
MIJIPAWAATAMAAN.



MAAMAAKAJ O'JIISHIZII
YAN. GITAA AADASOOKE
GIIWIISAGENDAMAN
SHIGWAA PAAPIYAN.

GIMIKWENDE MINAA
WENEN GIINAAWIN SHIGAA
E'PIIJISOONGIZIYAANG



GAAWIIN
GIKENDAZIIN
GEGO'PII
JIZOONGIZIYAAN.



GAKINOOGEGO
KAAWJIIGI'EK. LOGAN
GEWII SHIGWAAKID
DEDEM WAAK ANOKIID
NI'SING SHIGWAA NI;SING.



GIZOONIZ GO'ZIS.
KAADOON GIAYAA,
SIINKAA AA'YAAYED.

ISHKODE.

KITAAYAN SOONGAK.

GAANWIIN
KIDOOJIDAAZII
KIIWIIYANG. SHIGWE
KITAA GO'NIGO.

KAAN GEGO E'IIWE.



DEDE GIKENDAAAN SANAQAK,
KEGAA TASHWAAWANDAGEN....
GEJINAA E'TEK DONUT SHOP
IZIPAA KITJAANHII











Check out our other books...



Tomorrow's Hope: Our First Nation story is about a young woman who is haunted by self-doubt, but finds refuge and support through her friends, family, and culture.



Strength of the Sash: Our Métis story is about a struggling young man finding refuge and a sense of self-worth in his rich heritage.



The Gift: Dog bites are a real problem in some rural communities. Knowing what to do, but maybe more importantly what not to do, could help avoid a painful bite. It's up to all of us to respect our relationship with dogs.



Invited Threat: A family's realization that the food they eat and make available to their community is not good for them. It's about making healthy decisions now, rather than waiting until it's too late.

For more information on existing titles visit:
www.istorystudio.com

Indigenous Story Studio
3240 Comox Road
Courtenay, BC V9N 3P8
email: sean@istorystudio.com
phone: 250-898-1193
www.youtube.com/istorystudio

Ontario Health, Cancer Care Ontario supports health professionals, organizations and policy-makers with the most up-to date cancer knowledge and tools to prevent cancer and deliver high-quality patient care.

Ontario Health, Cancer Care Ontario actively engages people with cancer and their families in the design, delivery and evaluation of Ontario's cancer system, and works to improve the performance of Ontario's cancer system by driving quality, accountability, innovation and value.

This comic was developed by Ontario Health's, Cancer Care Ontario Indigenous Cancer Control Unit, whose work addresses cancer among First Nations, Inuit, Métis and urban Indigenous communities in Ontario.

If you have any questions, please email us at iccu@ontariohealth.ca.

Ontario Health is committed to ensuring accessible services and communications to individuals with disabilities. To receive any information on this website in an alternate format, please contact Ontario Health's Communications Department at: **1-877-280-8538**, TTY **1-800-855-0511**, or by email at info@ontariohealth.ca.